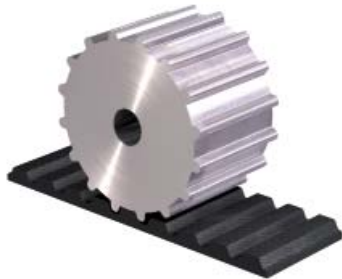




**Neoprene timing belts** are manufactured in a sophisticated production process using chloroprene with glass-fiber cords and protective fabrics on the running surface. This material combination renders them suitable for heavy-duty, high-speed machine drives that require a constant transmission of speed and need to be basically maintenance-free. Neoprene timing belts are characterized by high efficiency, accurate running properties and high operational reliability. They exhibit outstanding mechanical, chemical and physical properties.



**Neoprene timing belts** are available by the meter in open length or endless sleeves in almost all lengths and widths.



**Neoprene molded timing belts** (sleeves) are vulcanized in special molds. In view of the high pitch accuracy along the entire length of the belt, they ensure smooth running and are suitable for high speeds.



**Neoprene timing belts, open-ended**

Open-ended timing belts are primarily used in linear applications. They are reinforced with glass-fiber or steel cords.