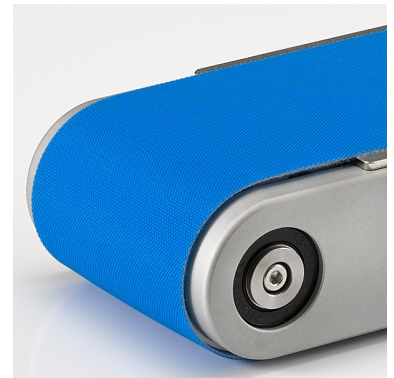




DATA SHEET CONVEYOR BELT



Article-No.	412080
Product name	2E/PHB00
Category	STABILOFLEX
Product group	PU Conveyor Belt

SPECIFICATIONS

Tractin layer

Material	polyester fabric
Number of layers	2
Properties	lateral stabil

Top side

Coating material	fabric
Color	light blue
Thickness (mm)	0,1
Surface	
Hardness (Shore A)	

Bottom side

Coating material	fabric
Color	nature
Thickness (mm)	0,0
Surface	fabric impregnated

TECHNICAL DATA

Total thickness (mm)	0,9
Weight (kg/qm)	1,0
Temperature longtime (°C)	- 20 / + 100
Temperature shorttime (°C)	
Friction coefficient (steel)	0,15

Tensile strength (1% tension) (N/mm)	5
Breaking strength (N/mm)	90

Minimum pulley Ø (mm)	8
with bending Ø (mm)	8

Max. production width (mm)	2000
----------------------------	------

Last modification on	01.03.2012
----------------------	------------

PROPERTIES

Food contact suitability

EU 10/2011	✓
FDA	✓
USDA	N/A

Antistatic	✓
Metal detector suitable	n.g.
Oil & fat resistant	✓
Flame resistant	Nein/no
Smooth running fabric	Nein/no

Suitable for

Slider bed	✓
Rollers	✓
Trough	Nein/no
Curved	Nein/no

Divers

suitable for knife edges, suitable for small pulley diameter, low coefficient of friction

Applications

Food industry, packaging, process belt, accumulation belt, deflection belt, food processing, transfer belt

Products

Baked Snacks, Bakery Products (Biscuits and Bread), Chocolate / Confectionery, Convenience Food, Pastries, Food Packaging