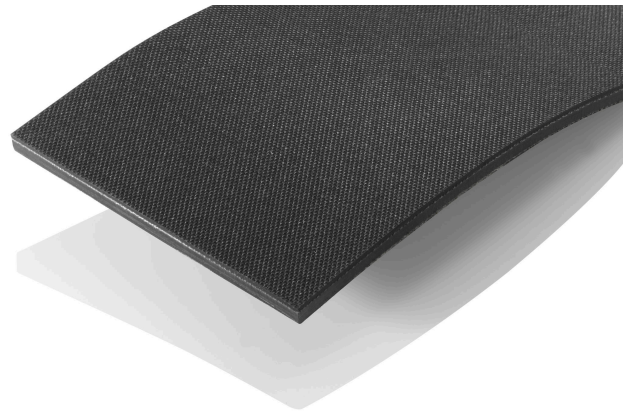




DATA SHEET FLATBELTS



Art. No.	20010
Product name	FLEXA 25G
Product group	FLEXA
Category	High efficiency belt

Specifications

Traction layer

Material	polyamide
----------	-----------

Back side

Material	fabric (PA)
Colour	black
Thickness	0
Surface	raw

Running side

Material	elastomer
Colour	black
Thickness	1
Surface	structured

Technical Data

Total thickness (mm)	2,7
Weight (kg/qm)	2,9
Temperature Range (°C)	- 20 / + 80
Coef. Friction > Steel	k.A.
Tensile Strength 1% tension N/mm	12
Tensile force (N/mm)	500
Min. pulley Ø (mm)	90
Max. production width (mm)	500

Properties

Antistatic	no
Flame resistant	no
Oil & fat resistant	yes

Applications

machine drives, wood-, paper- and printing industry, packaging machines, generators

Products

Flat belt drives, carrying roller drives, ventilation systems, tethers, mill drives, balance systems

Additional information

high efficiency, high belt speed, shock resistance, reliable adhesion and power transmission even

Last data modification 01.05.2018