

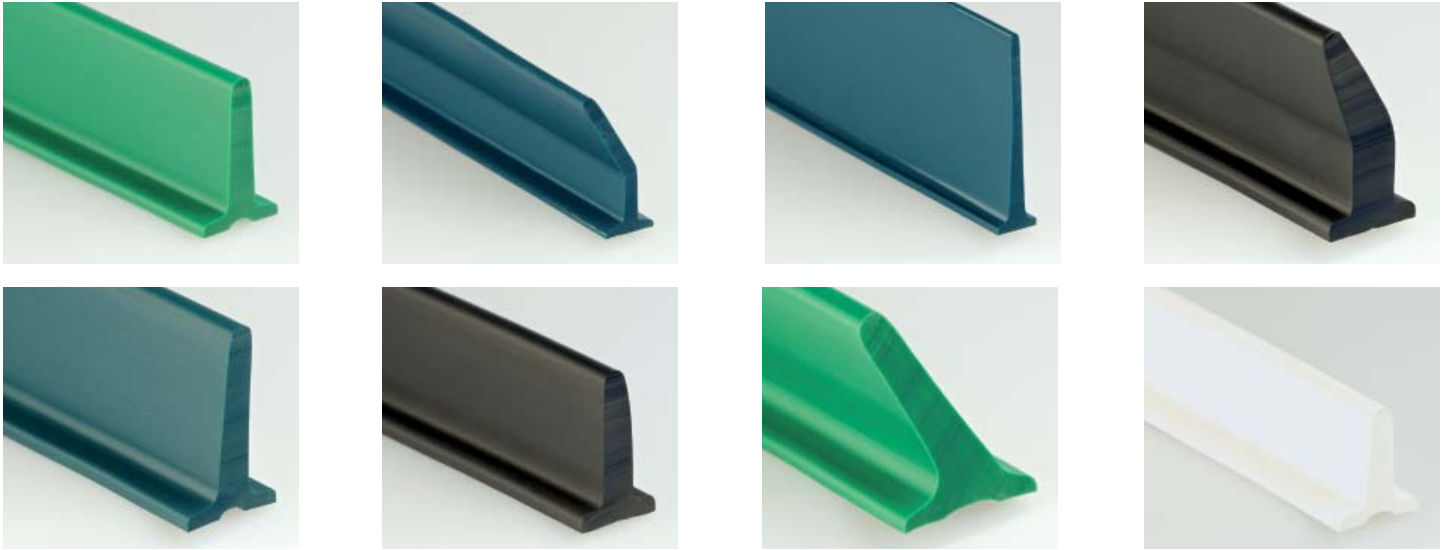
PVC or PU cleats are homogeneously welded onto the surface in high-frequency welding machines or bonded securely to the belting in a bonding process. Cleats and entraining elements are used in ascending or descending conveyor systems, for linear movements and when lateral forces occur. They ensure that the products to be conveyed are carried along, transported and placed correctly.

Designs

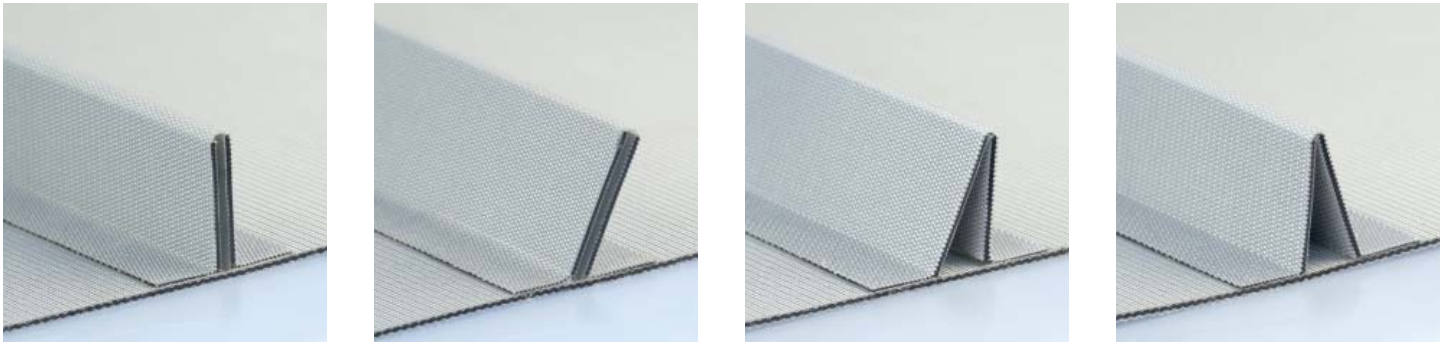
- Straight 90° (T), slanted 60° (S) or angled (L)
- Standard with foot or without foot on request
- Depending on the design, the cleats are resistant to oil and grease and suitable for use with food

Colors

- PVC white, light-blue, blue, petrol, green, black
- PU white, light-blue, blue, petrol, green, black


PVC and PU cleats with solid

Profile	Material	Height in mm	Foot width in mm	Hardness °ShoreA	min. pulley-Ø in mm	Weight ca. in g/m	Design
PVC-T20	PVC	20	20	65	50	0,3	straight 90°
PVC-T30	PVC	30	25	65	70	0,4	straight 90°
PVC-T40	PVC	40	25	65	100	0,5	straight 90°
PVC-T50	PVC	50	30	65	120	0,9	straight 90°
PVC-T60	PVC	60	30	65	150	1,4	straight 90°
PVC-T75	PVC	75	40	65	190	1,7	straight 90°
PVC-S30	PVC	30	25	65	75	0,45	slanted 60°
PVC-S40	PVC	40	30	65	100	0,6	slanted 60°
PVC-S50	PVC	50	30	65	125	0,95	slanted 60°
PVC-S60	PVC	60	40	65	150	1,5	slanted 60°
PVC-S75	PVC	75	45	65	195	1,8	slanted 60°
PU-T10	PU	10	15	85	50	60	straight 90°
PU-T20	PU	20	10	85	50	90	straight 90°
PU-T25	PU	25	15	85	50	120	straight 90°
PU-T30	PU	30	10	85	50	150	straight 90°
PU-T40	PU	40	10	85	50	160	straight 90°
PU-T50	PU	50	10	85	50	165	straight 90°
PU-T60	PU	60	12	85	50	270	straight 90°
PU-L40	PU	40	15	85	50	195	angled



PVC and PU cleats made of belt material

Profile	Material	Height in mm	Foot width in mm	Hardness °ShoreA	min. pulley-Ø in mm	Weight ca. in g/m	Design
PVC-TG20	PVC	20	35	n.A.	30	n.A.	straight 90°
PVC-TG30	PVC	30	35	n.A.	45	n.A.	straight 90°
PVC-TG40	PVC	40	35	n.A.	60	n.A.	straight 90°
PVC-TG50	PVC	50	55	n.A.	75	n.A.	straight 90°
PVC-TG60	PVC	60	55	n.A.	90	n.A.	straight 90°
PVC-TG70	PVC	70	55	n.A.	100	n.A.	straight 90°
PVC-TG80	PVC	80	55	n.A.	120	n.A.	straight 90°
PVC-TG100	PVC	100	55	n.A.	150	n.A.	straight 90°
PVC-TG110	PVC	110	55	n.A.	165	n.A.	straight 90°
PVC-SG30	PVC	30	55	n.A.	45	n.A.	slanted 60°
PVC-SG40	PVC	40	55	n.A.	60	n.A.	slanted 60°
PVC-SG50	PVC	50	55	n.A.	75	n.A.	slanted 60°
PVC-SG60	PVC	60	55	n.A.	90	n.A.	slanted 60°
PVC-SG75	PVC	75	55	n.A.	110	n.A.	slanted 60°
PVC-SG95	PVC	95	55	n.A.	140	n.A.	slanted 60°
PU-TG20	PU	20	20	n.A.	30	n.A.	straight 90°
PU-TG30	PU	30	20	n.A.	50	n.A.	straight 90°
PU-TG40	PU	40	20	n.A.	60	n.A.	straight 90°
PU-TG50	PU	50	20	n.A.	75	n.A.	straight 90°
PU-TG60	PU	60	20	n.A.	90	n.A.	straight 90°
PU-TG80	PU	80	20	n.A.	120	n.A.	straight 90°
PU-SG30	PU	30	30	n.A.	50	n.A.	slanted 60°
PU-SG40	PU	40	30	n.A.	60	n.A.	slanted 60°
PU-SG50	PU	50	30	n.A.	75	n.A.	slanted 60°
PU-SG60	PU	60	30	n.A.	90	n.A.	slanted 60°
PU-SG80	PU	80	30	n.A.	120	n.A.	slanted 60°

Keiper also has a large range of special cleats, such as profiled cleats made of belt material, wave, loop, felt and fabric cleats, finger profiles or cleats produced according to the customer's individual specifications.

