

Guides made of thermoplastic PVC or PU are homogeneously welded onto the surface in high-frequency welding machines or bonded securely to the belting in a bonding process.

Wedge guides are used to ensure that the belt is guided directionally correct and stably on the conveying system and to prevent the conveyor belt from running off.

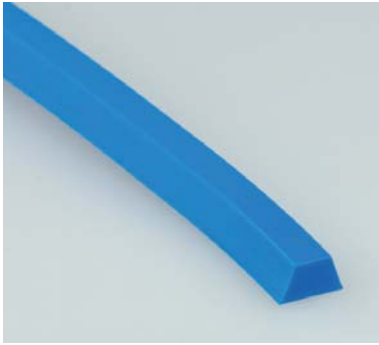
Entraining elements are used in ascending or descending conveyor systems, for linear movements and when there are lateral forces. They ensure that the products to be conveyed are carried along, transported and placed correctly.

Designs

- V-shape profile (K) smooth or notched, block profile (V) or rectangular profile (R)
- Depending on the design, they are resistant to oil and grease and suitable for use with food

Colors

- PVC white, blue, petrol, green, black
- PU white, transparent, light-blue, blue, petrol, green, black



| Profile | Material | Width in mm | Height in mm | Hardness °ShoreA | min. pulley - Ø in mm | | | Weight ca. in g/m |
|--------------|----------|-------------|--------------|------------------|-----------------------|-------------------------|-------------------------|-------------------|
| | | | | | Cross profile | Longitudinal profile CS | Longitudinal profile RS | |
| PVC - K6x4 | PVC | 6 | 4 | 65 | 30 | 70 | 40 | 25 |
| PVC - K8x5 | PVC | 8 | 5 | 65 | 40 | 100 | 50 | 45 |
| PVC - K10x6 | PVC | 10 | 6 | 65 | 50 | 120 | 60 | 60 |
| PVC - K13x8 | PVC | 13 | 8 | 65 | 60 | 150 | 80 | 100 |
| PVC - K15x8 | PVC | 15 | 8 | 65 | 70 | 170 | 80 | 130 |
| PVC - K17x11 | PVC | 17 | 11 | 65 | 80 | 180 | 110 | 170 |
| PVC - K22x14 | PVC | 22 | 14 | 65 | 120 | 220 | 140 | 280 |
| PVC - K30x16 | PVC | 30 | 16 | 65 | - | 250 | 200 | 480 |
| | | | | | | | | |
| PVC - V10x10 | PVC | 10 | 10 | 65 | 50 | 130 | 100 | 170 |
| PVC - V15x15 | PVC | 15 | 15 | 65 | 70 | 180 | 150 | 270 |
| PVC - R20x15 | PVC | 20 | 15 | 65 | 100 | 250 | 200 | 360 |
| | | | | | | | | |
| PU - K6x4 | PU | 6 | 4 | 85 | 30 | 50 | 40 | 25 |
| PU - K8x5 | PU | 8 | 5 | 85 | 40 | 80 | 50 | 40 |
| PU - K10x6 | PU | 10 | 6 | 85 | 50 | 110 | 60 | 60 |
| PU - K13x6,5 | PU | 13 | 6,5 | 85 | 60 | 130 | 70 | 85 |
| PU - K13x8 | PU | 13 | 8 | 85 | 60 | 140 | 80 | 96 |
| PU - K17x11 | PU | 17 | 11 | 85 | 80 | 160 | 110 | 170 |
| | | | | | | | | |
| PU - R19x8 | PU | 19 | 8 | 85 | 100 | 200 | 100 | 280 |