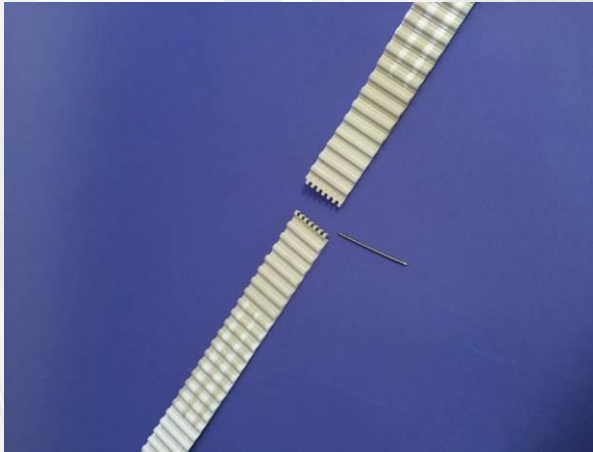


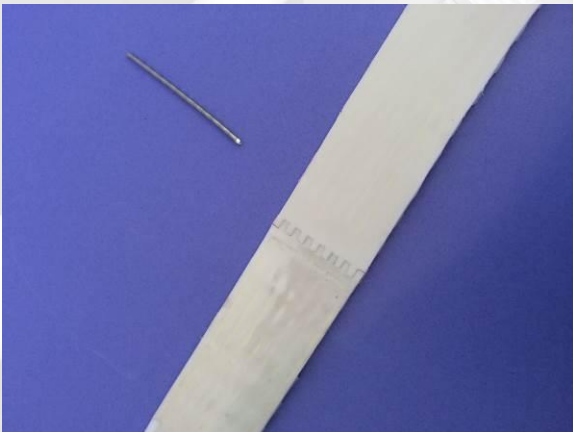
# Assembly instructions for easy joint



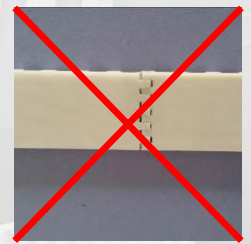
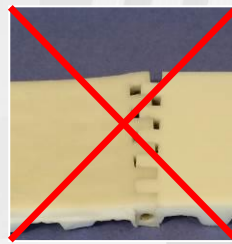
# easy joint

*T20 and 14M version*

1



Align the teeth. Teeth must be correctly aligned to avoid any cables damage during pin threading. Misalignment of teeth or the using of a non-chamfered pin can damage the belts cables during the installation



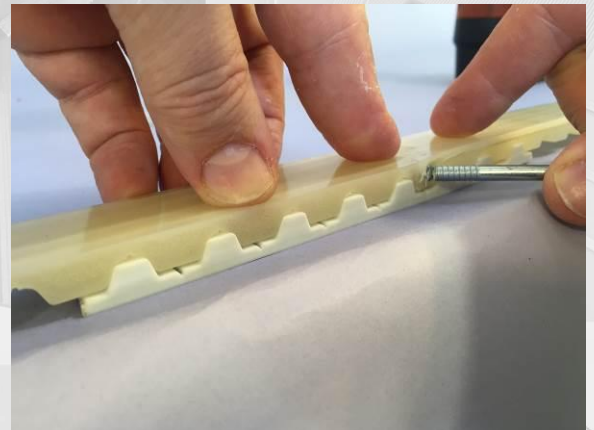
Cables are in contact with the pin ; be careful to prevent any cables damages during the installation  
Check to correctly encase the joint's teeth.

2



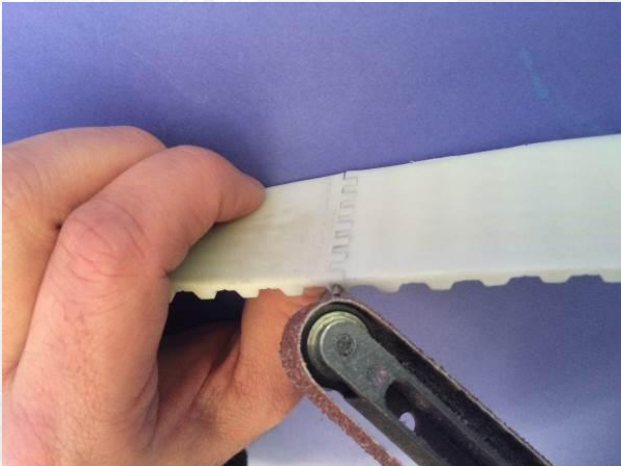
Begin to thread the pin by using an electric screwdriver and water (using as lubricant), to help the threading. For a correct alignment, use the furnished piece of belt, like photo.

3



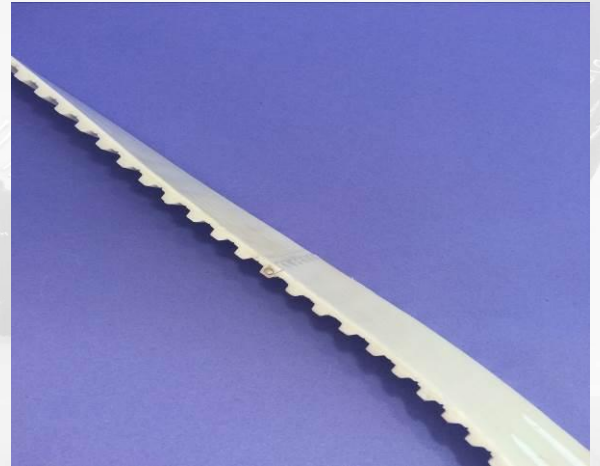
When the pin is completely inserted in the belt, break the pin at the precut area.

4

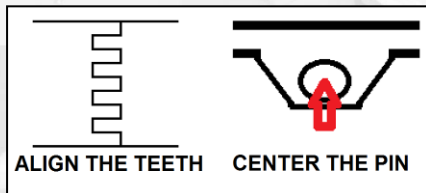


Then, grind the pins side which exceed if necessary.

5



Check that the pin doesn't exceed any edge of the belt.



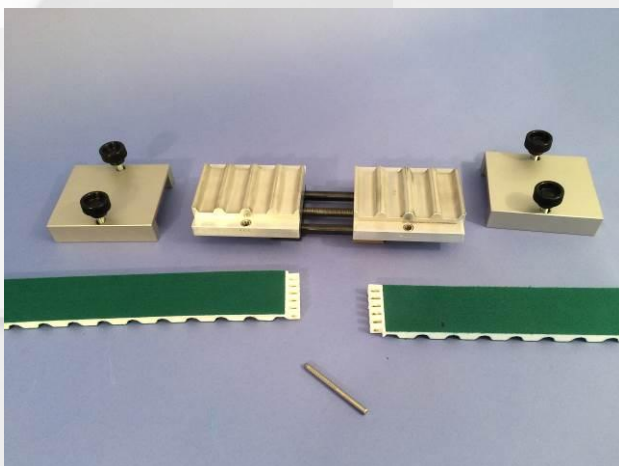
Respect the indications on the belt:

**ALIGN THE TEETH – CENTER THE PIN**

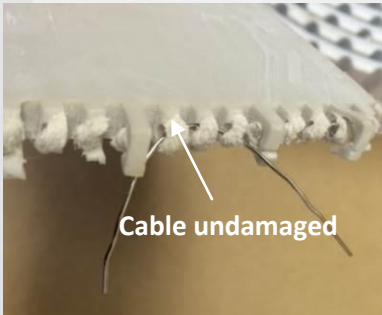
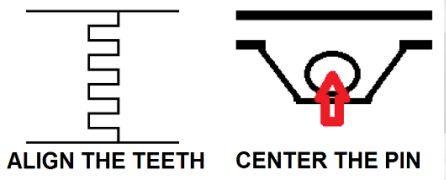
### Make the mounting easier:

If your machine doesn't have a tensioning system, ask for the tensioning tool for easy joint belts.

Possibility to mount the belt in 2 times, pins with head mounted in front of each other (locking pins);  
Contact us for more information!



## Troubleshooting Guide

Problem	Possible cause	Solution
<b>Joint breaking</b>	Too high tensioning	Reduce the tension
	Incident or usury	
	Bad pin insertion / Misalignment of joints teeth 	<p>The photo shows a case where pin was not correctly inserted (cables are not damaged). Possible cause is a misalignment of the joint teeth.</p> <p>Read carefully the mounting documentation, and follow the instruction :</p> <div>  </div>
<b>Hard pin insertion</b>	Absence of lubricant	Use water to help the insertion
	Misalignment of joints teeth	Align correctly the joints teeth
	No use of a chamfered pin	Use a chamfered pin, or ask for it